

Air Injection Vacuum Blower SIAV 8702

Hibon Ingersoll Rand presents state-of-the-art technology in three-lobe, positive displacement blowers. The SIAV air-injected, high-vacuum blowers offer a wide range of design features and incorporate energy efficiency improvements, complying with the strictest operational requirements of a variety of applications. These high-vacuum blowers are ideally suited for the rigorous demand of the vacuum truck market. Hibon is a worldwide leader in three-lobe positive displacement blower technology with thousands of units installed around the globe.

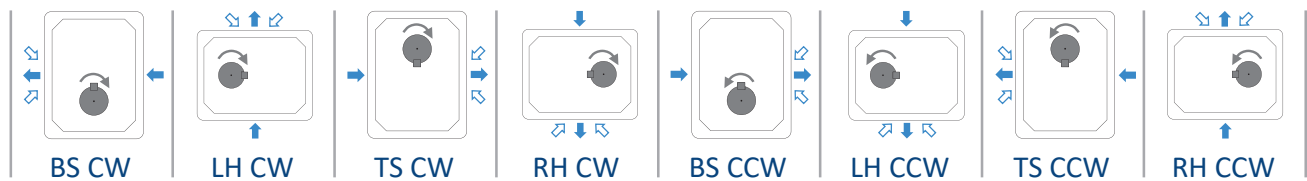
Characteristics

- Three-lobe impeller construction
- Unique air injection system
- Increased efficiency
- Clearances adjusted automatically during assembly
- Larger oil capacity
- High volume oil thrower
- High performance sealing arrangement using 4 piston rings

Benefits

- Quieter operation than two-lobe impeller construction
- Allows high vacuum including “dead end” operation without overheating
- No oil or water cooling system (100% oil free air)
- Requires less horsepower for the same performance
- Easier maintenance
- Runs cooler
- Better lubrication of bearings
- Less frequent oil changes

Configurations



Configuration	With feet option	Without feet
BS CW	.	F1868200101
LH CW	.	F1871200101
TS CW	.	F1868200500
RH CW	.	F1871200202
BS CCW	.	F1868200100
LH CCW	.	F1869200100
TS CCW	.	F1868200501
RH CCW	.	F1871200102

- ↻ Shaft rotation
- ➡ Air flow
- ↕ Air injection
- RH = Right hand shaft
- LH = Left hand shaft
- BS = Bottom shaft
- TS = Top shaft
- CW = Clockwise rotation
- CCW = Counter clockwise rotation

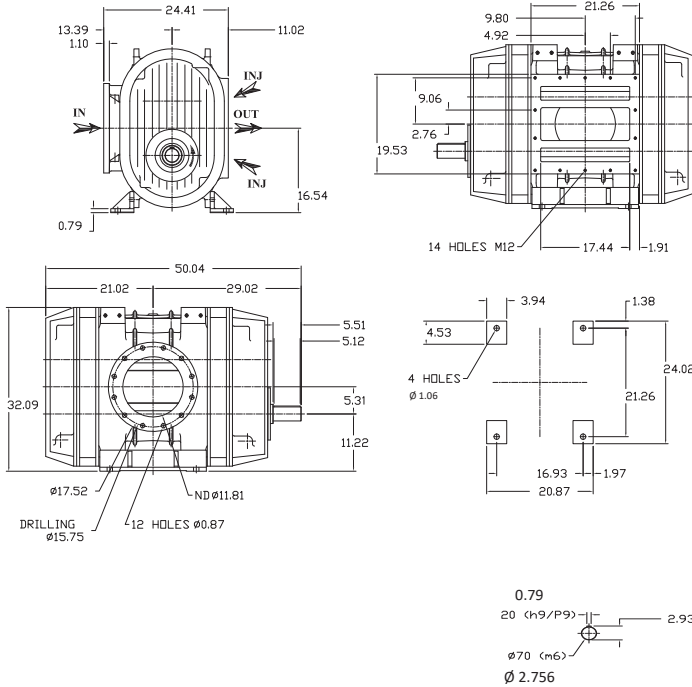
Performance chart

VOLUME DISPLACEMENT *(5250 CFM)																
Speed (RPM)	6" HG		9" HG		12" HG		15" HG		18" HG		21" HG		27" HG		28" HG	
	CFM	BHP	CFM	BHP	CFM	BHP	CFM	BHP	CFM	BHP	CFM	BHP	CFM	BHP	CFM	BHP
800	1846	30	1781	42	1714	54	1639	68	1531	81	1345	94	BO	120		
1200	2873	45	2809	63	2742	81	2666	103	2558	121	2372	140	886	181		
1400	3387	52	3322	73	3255	95	3180	120	3072	142	2886	164	1400	211		
1600	3900	60	3836	84	3769	108	3693	137	3585	162	3400	187	1913	241		
1800	4414	67	4350	94	4283	122	4207	154	4099	182	3913	211	2427	271		
2000	4927	74	4863	105	4796	135	4721	171	4613	202	4427	234	2940	300	BO	311

* Volume displacement at maximum speed. BO = Blanked off

SIAV 8702

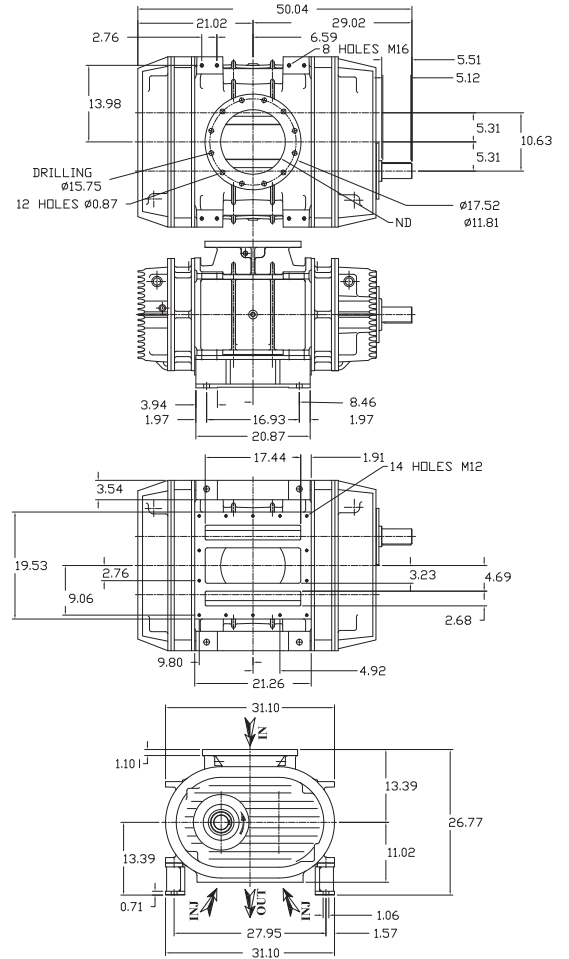
Configuration BS CCW



- NOTES:
 1. ENGLISH UNITS (INCH) UNLESS OTHERWISE NOTED.
 2. WEIGHT: 2756 lbs.
 3. C.W. SHAFT ROTATION ALSO AVAILABLE ON REQUEST.
 4. DO NOT USE FOR CONSTRUCTION.

Dimensions

Configuration LH CCW



Spare parts and accessories

KIT 1 - STANDARD MAINTENANCE KIT	KIT 2 - SET OF RING HOLDERS	KIT 3 - SET OF GEARS	MANIFOLD & DISCHARGE/INJECTION MANIFOLD GASKETS	HIBON LUBE
<p>Contains all parts required for 40 000 h. maintenance</p> 				

For more information about spares and accessories, contact your nearest Service Center or Ingersoll Rand - Hibon company.



COMPRESSED AIR SYSTEMS AND SERVICES HIBON INC

100 Voyageur
 Pointe-Claire, Quebec
 Canada
 H9R 6A8

T: +1 514 631-3501
 F: +1 877 584 0307

www.hibon.com

Ingersoll Rand Inc. (NYSE:IR), driven by an entrepreneurial spirit and ownership mindset, is dedicated to helping make life better for our employees, customers and communities. Customers lean on us for our technology-driven excellence in mission-critical flow creation and industrial solutions across 40+ respected brands where our products and services excel in the most complex and harsh conditions. Our employees develop customers for life through their daily commitment to expertise, productivity and efficiency. For more information, visit www.IRco.com.

©2022 Ingersoll-Rand Company