

HXL-Series II , Vacuum / Pressure Pumps

HXL400WV

◆ Solid 6 Vane Rotor Design

- Higher Airflow Efficiency.
- Higher Dead Head Vacuum.
- Less Vane Wear.
- Less Cylinder Wear.
- Less Noise.
- Less Vibration.

◆ Liquid Cooled Design

- Prevents Winter Freeze-ups.
- Allows Pump to Operate @ 25"Hg Continuously.
- Reliable Operation Under Extreme Hot or Cold Weather Conditions.

◆ Mechanical Oil Pump

- Automatic Oiling.
- No Adjustment Required.
- Delivers Right Amount of Oil at All Working Levels.

◆ End Thrust Protection

- Prevents Rotor-to-Endcover Contact Created by Direct P.T.O. Drive or Misaligned Belt Driven Systems.

◆ Double End Shaft

- Accommodates Clockwise or Counter-Clockwise Drive Systems.

◆ Integral Valve

- Allows Pump to Operate in Vacuum and Pressure Mode.



◆ Masport Quality & Performance

- Achieve Minimum 27" Hg (Intermittent).
- Bolt on Half Shafts.
- Precise Machining and Assembly.
- Heavy Duty Bearings.
- Viton Oil Seals for Longer Service Life.
- Kevlar Vanes are Heat Stabilized and Machined with Exacting Tolerances for Superior Ruggedness and Durability.
- Easy to Service.
- Superior Pump Life.

◆ Performance Warranty

- One Year Warranty.

PERFORMANCE DATA

Performance Data – Vacuum

Pump R.P.M.	Displacement C.F.M.	S.C.F.M. and A.C.F.M. @ VACUUM											Maximum Vacuum – “Hg	
			5	10	15	18	20	22	24	25	26	27	Continuous	Intermittent
1100	345	SCFM	269	204	150	120	100	80	57	47	35	25	25	27
		ACFM	323	306	300	300	300	300	300	282	263	250		
1275	400	SCFM	312	237	175	140	117	93	66	54	41	29	25	27
		ACFM	374	356	350	350	350	350	350	324	308	290		

Performance Data – Pressure

Pump R.P.M.	Displacement C.F.M.	S.C.F.M. @ P.S.I.G.							Maximum Pressure – P.S.I.G.	
		5	10	15	18	20	25	30	Continuous	Intermittent
1100	345	321	307	292	275	258	243	224	20	30
1275	400	372	356	339	319	300	282	264	20	30

Horsepower Required @ P.S.I.G.

Pump R.P.M.	P.S.I.G.					
	5	10	15	20	25	30
1100	20	24	28	32	35	42
1275	24	28	33	38	42	50

Horsepower Required @ “Hg

Pump R.P.M.	Vacuum “Hg		
	15	20	27
1100	15	16.5	17
1275	17.7	19.5	20.1

DIMENSIONAL DATA

HXL400WV Pump

	HXL400WV	HXL400WF
A	13 1/2	13 1/2
B	25 1/2	16 1/2
C	8 5/8	8 5/8
D	27 1/8	27 1/8
E	1 3/8	1 3/8
F	9 7/16	9 7/16
G	1/8	1/8
H	19 1/2	-----
J	9/16	9/16
K	5/16 x 5/16 x 2	5/16 x 5/16 x 2
L	7 7/16	7 7/16
M	1/4	1/4
N	3	2 1/2
O	7 1/4	7 1/4
P	3 5/16	3 5/16
Q	3 13/16	3 13/16
R	8 1/2	8 1/2
S	12 1/2	12 1/2
T	4 9/16	4 9/16
U	3 7/16	3 7/16
V	5	5
W	5	5
X	8 1/4	8 1/4
Y	8 1/4	8 1/4

ALL DIMENSIONS IN INCHES.

For additional information on these quality Masport Vacuum / Pressure Pumps contact:



MASPORT INCORPORATED

6140 McCormick Drive

Lincoln, Nebraska 68507

Ph: 402-466-8428 Fax: 402-466-8355

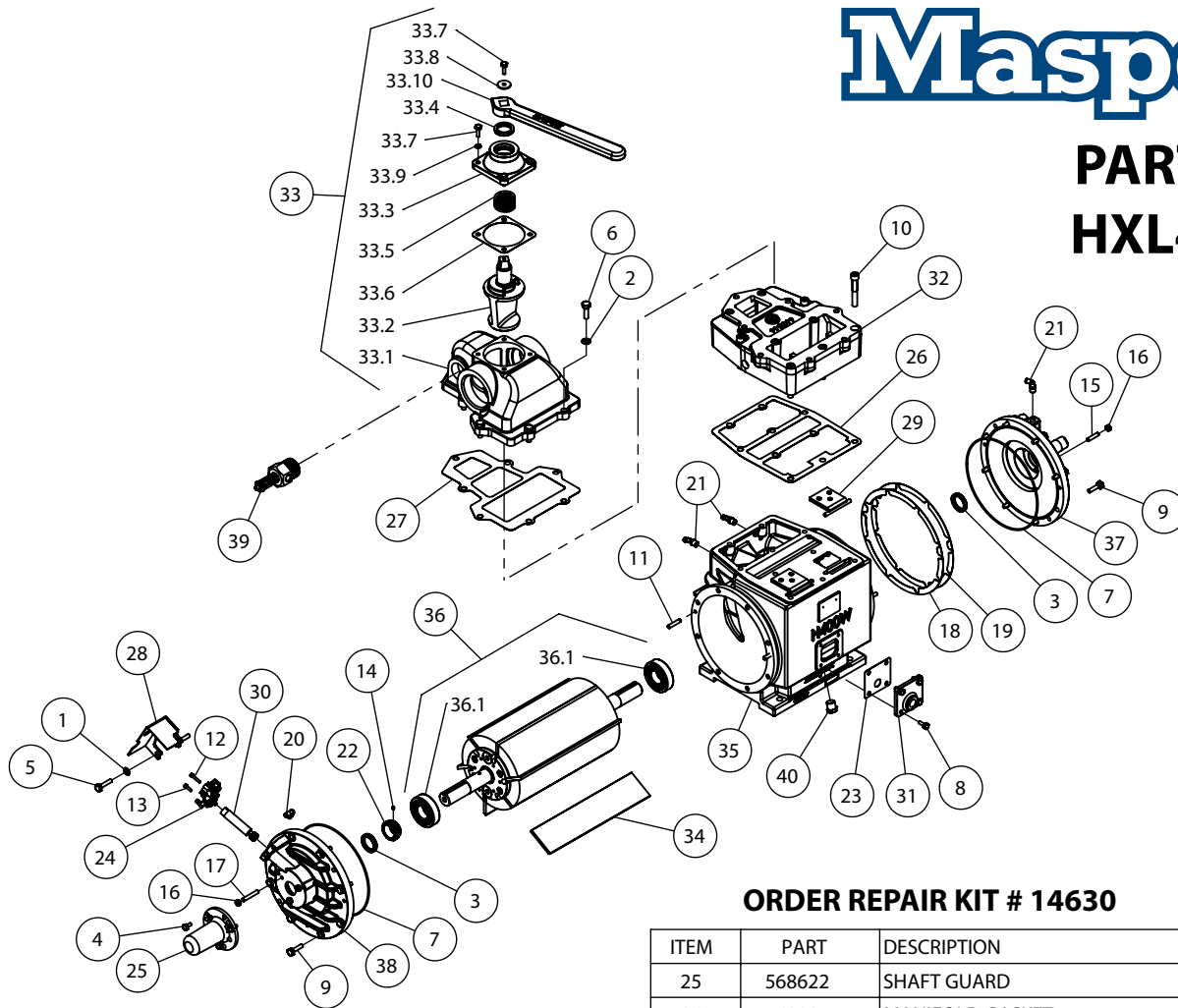
E-Mail: masport.sales@alltel.net

Web: www.masportpump.com

CALL TOLL FREE 800-228-4510



PARTS LIST HXL400WV



968980 HXL400WV PUMP

ORDER REPAIR KIT # 14630

ITEM	PART	DESCRIPTION	QTY.
1	32508	WASHER 3/8	2
2	500203	LOCKWASHER M12	7
3	501015	OIL SEAL	2
4	501571	BOLT M8 X 16 HEX	3
5	501584	BOLT M10 X 40 HEX	2
6	501666	BOLT M12 X 35 HEX	7
7	501677	O-RING	2
8	501848	BOLT M8 X 20 HEX	4
9	501878	BOLT M10 X 35 HEX	14
10	501965	ALLEN HD SCREW M12 X 80	10
11	503261	DOWEL PIN M8 X 40	4
12	504261	ALLEN HD SCREW M5 X 25	1
13	504262	ALLEN HD SCREW M5 X 16	1
14	504264	SET SCREW M5 X 6	1
15	504276	SET SCREW M8 X 35	3
16	504278	NUT M8 BINX	6
17	504287	SET SCREW M8 X 50	3
18	542011	SHIM .002" BLUE	***
19	542012	SHIM .003" GREEN	***
20	568085	ELBOW 1/8" NPT SWIVEL	1
21	568086	ELBOW 1/4" NPT SWIVEL	3
22	568158	WORM GEAR	1
23	568232	SIDE PLATE GASKET	1
24	568437	OIL PUMP 221cc	1

ITEM	PART	DESCRIPTION	QTY.
25	568622	SHAFT GUARD	1
26	568805	MANIFOLD GASKET	1
27	568884	VALVE GASKET	1
28	568903	GUARD - OIL PUMP	1
29	968026	FLAP ASSEMBLY	2
30	968045	DRIVE SHAFT ASSEMBLY	1
31	968231	SIDE PLATE	1
32	968846	MANIFOLD	1
33	968887	VALVE	1
33.1	968883	VALVE BODY	1
33.2	968804	VALVE SPOOL	1
33.3	968035	VALVE CAP	1
33.4	501674	OIL SEAL	1
33.5	568038	VALVE SPRNG	1
33.6	568044	VALVE CAP GASKET	1
33.7	501617	BOLT M8 X 25 HEX	5
33.8	501550	WASHER M8	1
33.9	501610	LOCKWASHER M8	4
33.10	968037	VALVE HANDLE	1
34	968918	VANE PACK (6)	1
35	968959	CYLINDER	1
36	968967	ROTOR ASSEMBLY	1
36.1	503098	ROLLER BEARING	2
37	968971	ENDCOVER NON OIL PUMP END	1
38	968976	ENDCOVER OIL PUMP END	1
39	25056	VAC RELIEF VALVE 1 1/2"	1
40	147621	PLUG 1/2"	1
41	600293	OIL LINE (FT)	5 FT

NOTE: *** REPRESENTS THAT QUANTITY MAY VARY, MAKE SURE TO REPLACE SHIMS WITH THE EXACT NUMBER AND COLOR THAT CAME OFF THE PUMP.